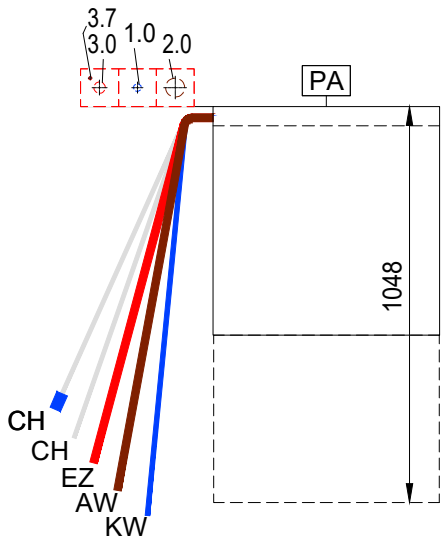
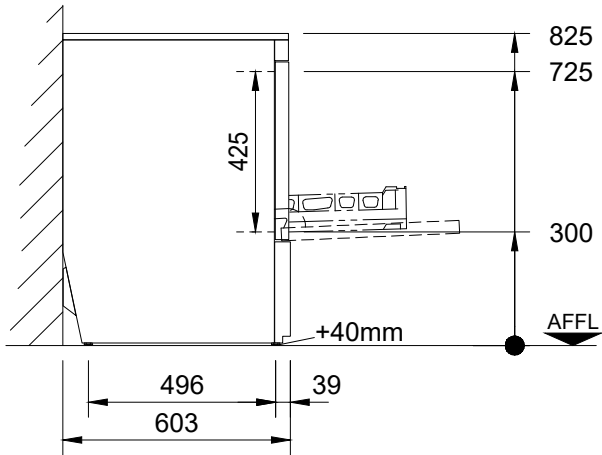
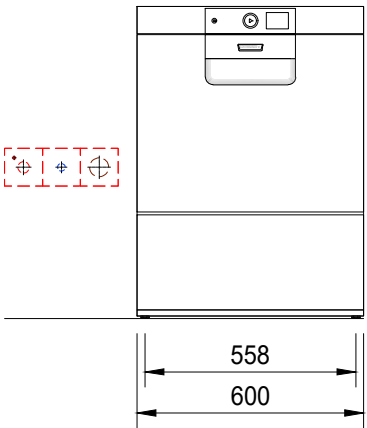


HOBART		GENERAL LEGEND			
AW	= drain water	KW	= cold water	AFFL	= above finished floor level
Dat	= dataline	KWw	= cold water soft	SFB	= separate filling-boiler
EZ	= power line (supply)	LR	= conduit Ø	VEW	= demineralized water
FD	= floor opening	CNS	= stainless steel (inox)	WD	= wall opening
HW-VL	= hot water flow	MK	= supply chanell	WS	= wall slot
HW-RL	= hot water return	PA	= equipotential conductor	WW	= warm water
KB	= cored hole Ø	STL	= control line	WWw	= warm water soft



HOBART

GENERAL INFORMATION

Connections: The connection of the dishwasher to all services (e.g. electrical, water, drain, exhaust) must comply with all national and local codes of practice and must be carried out by qualified people.

Attention: If the dishwasher has a frequency inverter included and is connected after a RCD (FI PROTECTIVE SWITCH), this must be AC/DC sensitive type B.

Exhaust: A frost-protection flap is recommended if the exhaust air from the machine is ducted directly outside. If an exhaust hood is installed on top of the dishwasher, an airgap of min. 150mm needs to be maintained. Operational fluctuations can lead to a temporary higher exhaust temperature and humidity (VDI 2052).

Dimensions: Dimensions in the drawing are finished dimensions in Millimeters.


Transport: Minimum measurements of entry doors = outer largest dimension of machine height + 300mm; machine width + 400mm!

Shut-off valves: The isolating valves for rinse water, tank filling or demi-rinse are to be supplied by others.

Wash result: A streak free result is achievable with low mineral concentration of the rinse water only (see caption "water/conductivity"). If necessary a de-mineralization system should be installed.

Floor drain: Splash floor drains should be installed for machine cleaning and for general cleaning purpose.

Ventilation: The ventilation and exhaust for the room must be according to VDI 2052. Radiated heat emissions must be considered.

Machine-Type:				Glasswasher				Heating: Electrical							
Model:				PREMAX GP-10C				Operation: front door							
Rack size:				500 x 500				Loading height: 425				Main-Switch: by others			
required supply (by others) (all installations according to local regulations) (technical feasibility must be checked on site)															
Electrical		Voltage		Frequency		Structure		Fuse		Total Load		Location			
3.7		PA		Equipotential								400mm AFFL			
3.0		EZ		400 V		50 Hz		3-N-PE		3 x 16 A		6,7 kW		400mm AFFL	
Water		Consumption		Temp.		Hardness		Conductance		Dimension		Connection		Location	
2.0		AW		Drain (Siphon provided by customer) / (max. drain height 750mm)						DN50		Drain pipe		400mm AFFL	
1.0		KWw		1,8 l / Rack		min. 10 °C		max. 1,25°e (0,2mmol/l) / 80µS/cm		DN20		G ¾ male		400mm AFFL	
				10,6 l (Filling)		max. 60°C		required water flow min. 5l/min							
Water-Flow-Pressure provided by customer min. 0,5 bar / 7,3 psi - max. 10 bar / 145 psi (Installation in accordance to DIN 1988!)															
machine-side connentions and data															
CH Supply hose for detergent				2500 mm				CH Supply hose for rinse aid, (blue marking)				2500 mm			
EZ Power cord				2000 mm				AW Drain hose ID20 / OD25				2000 mm			
								KWw Supply hose R¾				2000 mm			
Heat-Radiation of the machine (thermal output to the room)															
washware:				1,1 kW				latent:				0,2 kW			
												sensible:			
												0,7 kW			
Index		Änderungen / Changes										Datum / Date		Name	
Das Urheberrecht an dieser Zeichnung verbleibt bei der HOBART GmbH. Jede nicht von uns schriftlich genehmigte Benutzung, Vervielfältigung, Überlassung an Dritte ist strafbar und macht schadensersatzpflichtig. This document contains proprietary and confidential data of HOBART GmbH. No disclosure, reproduction or use of any part there of may be made without written permission of HOBART GmbH.															
				HOBART GmbH Robert-Bosch-Straße17 77656 Offenburg, Germany						Tel.: +49(0)781.600-0 Fax.: +49(0)781.600-2319 www.hobart.de					
Datum / Date: 31.01.2024		Project:													
Gezeichnet / Drawn by: S.Doll															
Geprüft / Checked by:															
Projectmanager:		Maßstab / Scale: 1:20 @ A3				Order-No.:				Zeichnungsnummer / Drawing-No.:				